



# IET FORMULA 24

## KIT CAR MANUAL



National partner



Global partner

**SIEMENS**

Global technology  
partner

**SOLID EDGE**

# ***TOOLS REQUIRED FOR THE BUILD***

---

## ***CHASSIS / MECHANICAL:***

- Metric Spanners (selection)
- Metric Allen Keys (selection)
- Cordless Drill
- 3.3mm Drill Bit
- 8mm Drill bit
- Pliers
- Side Cutters
- Screwdrivers (selection)
- Pop Riveter
- Craft Knife
- Small G Clamps
- Double Sided Tape
- Safety Equipment

## ***FINISHING:***

- Tyre Levers
- Tyre Pump with Pressure Gauge
- Cable Ties

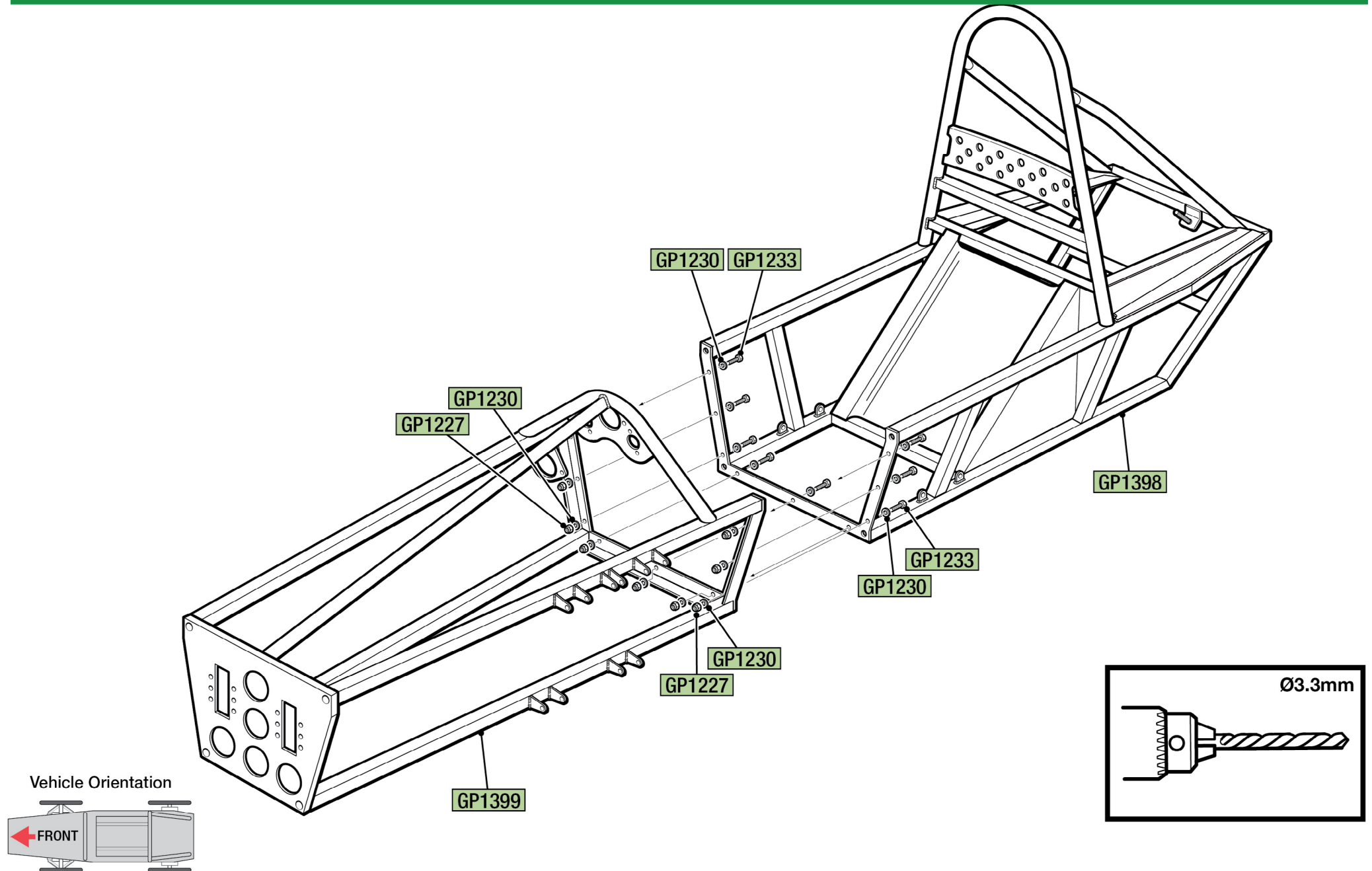
# CONTENTS

---

<b>FRONT AND REAR CHASSIS ASSEMBLY</b>	<b>4</b>	<b>ELECTRICS</b>	<b>13</b>
<b>FITTING FLOOR TO CHASSIS</b>	<b>5</b>	<b>REAR FREE WHEEL ASSEMBLY</b>	<b>14</b>
<b>SAFETY HARNESS</b>	<b>6</b>	<b>MOTOR AND CHAIN ASSEMBLY</b>	<b>15</b>
<b>FRONT UPRIGHT ASSEMBLY</b>	<b>7</b>	<b>STEERING LINKAGE ASSEMBLY</b>	<b>16</b>
<b>CAMBER, TRACKING, ACKERMANN AND RIDE HEIGHT</b>	<b>8</b>	<b>HEADREST AND REAR LIGHT</b>	<b>17</b>
<b>STEERING SYSTEM, HORN, BRAKE LEVER AND STARTER BUTTON</b>	<b>9</b>	<b>COCKPIT AND NOSE CONE REAR PADDING</b>	<b>18</b>
<b>FRONT WHEEL AND BRAKE ASSEMBLY</b>	<b>10</b>	<b>SEAT BACK AND HEADREST PADDING</b>	<b>19</b>
<b>REAR AXLE ASSEMBLY</b>	<b>11</b>	<b>WIRING DIAGRAM</b>	<b>20</b>
<b>REAR DRIVE WHEEL ASSEMBLY</b>	<b>12</b>	<b>BATTERY ASSEMBLY</b>	<b>21</b>



# FRONT AND REAR CHASSIS ASSEMBLY



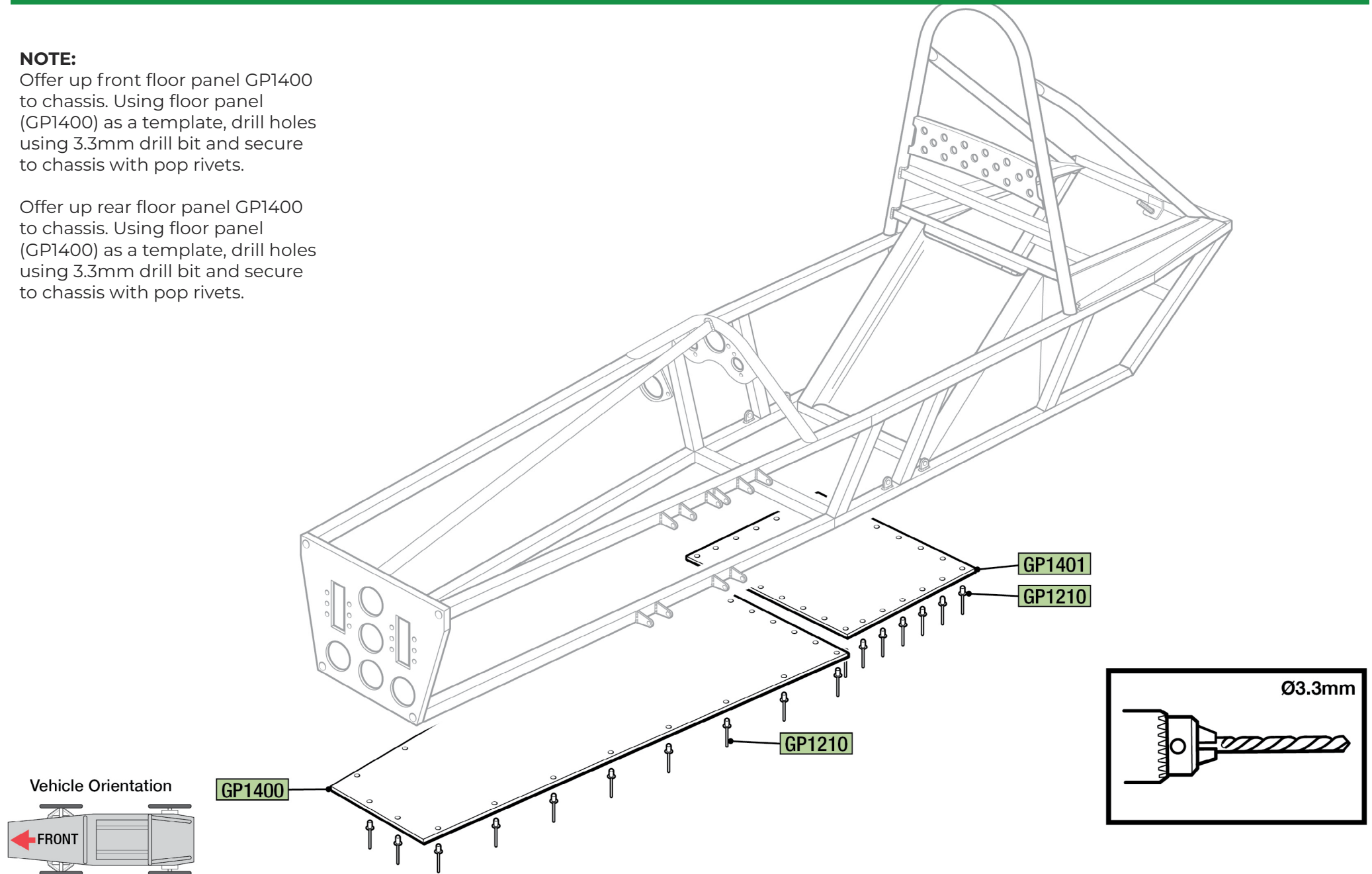


# FITTING FLOOR TO CHASSIS

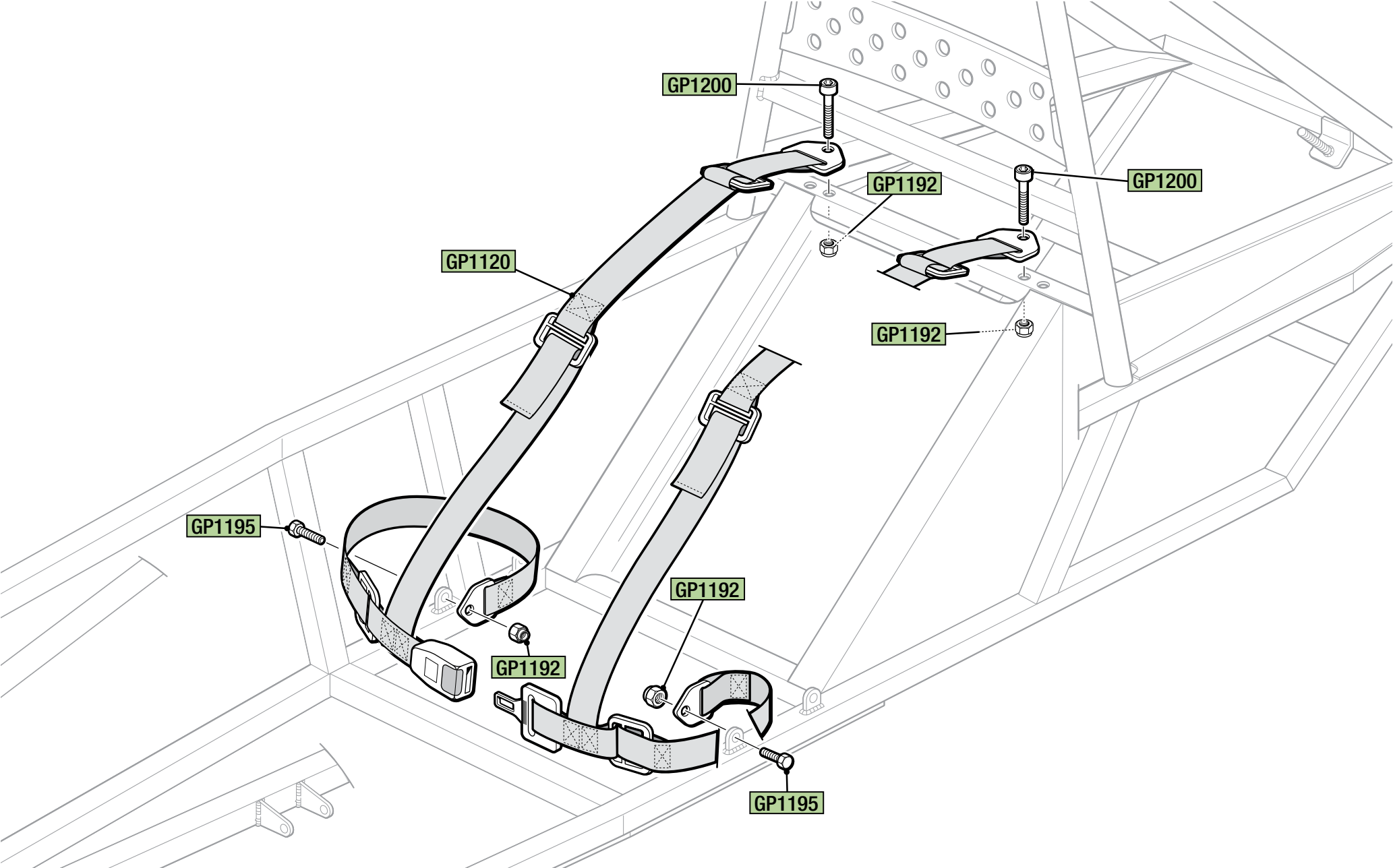
## NOTE:

Offer up front floor panel GP1400 to chassis. Using floor panel (GP1400) as a template, drill holes using 3.3mm drill bit and secure to chassis with pop rivets.

Offer up rear floor panel GP1400 to chassis. Using floor panel (GP1400) as a template, drill holes using 3.3mm drill bit and secure to chassis with pop rivets.

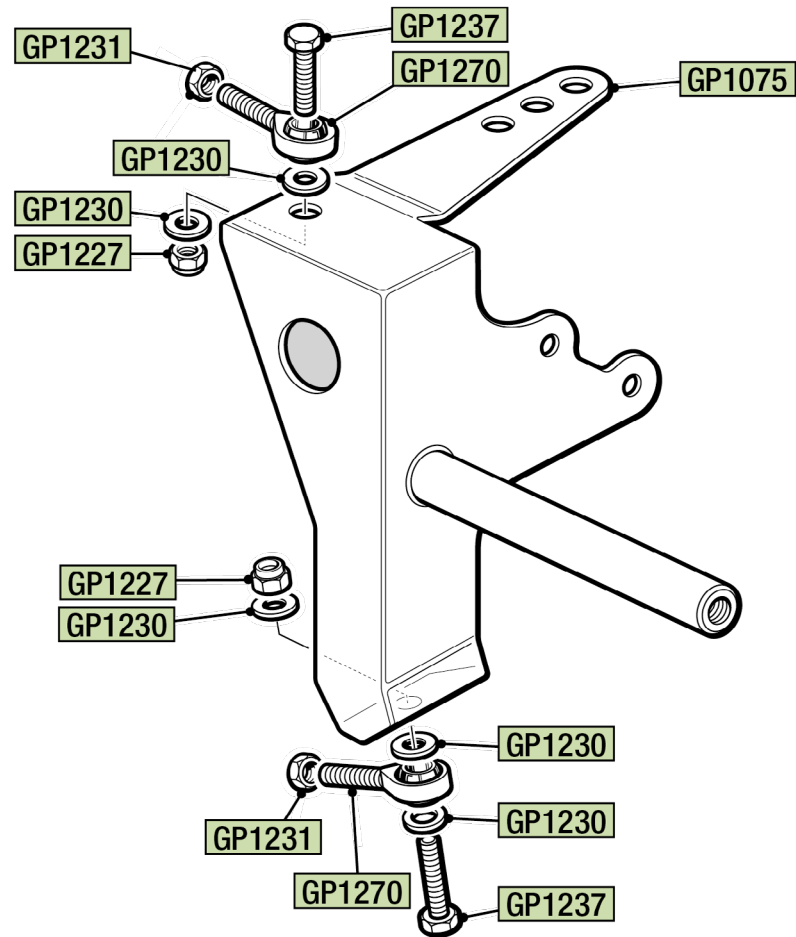


# SAFETY HARNESS



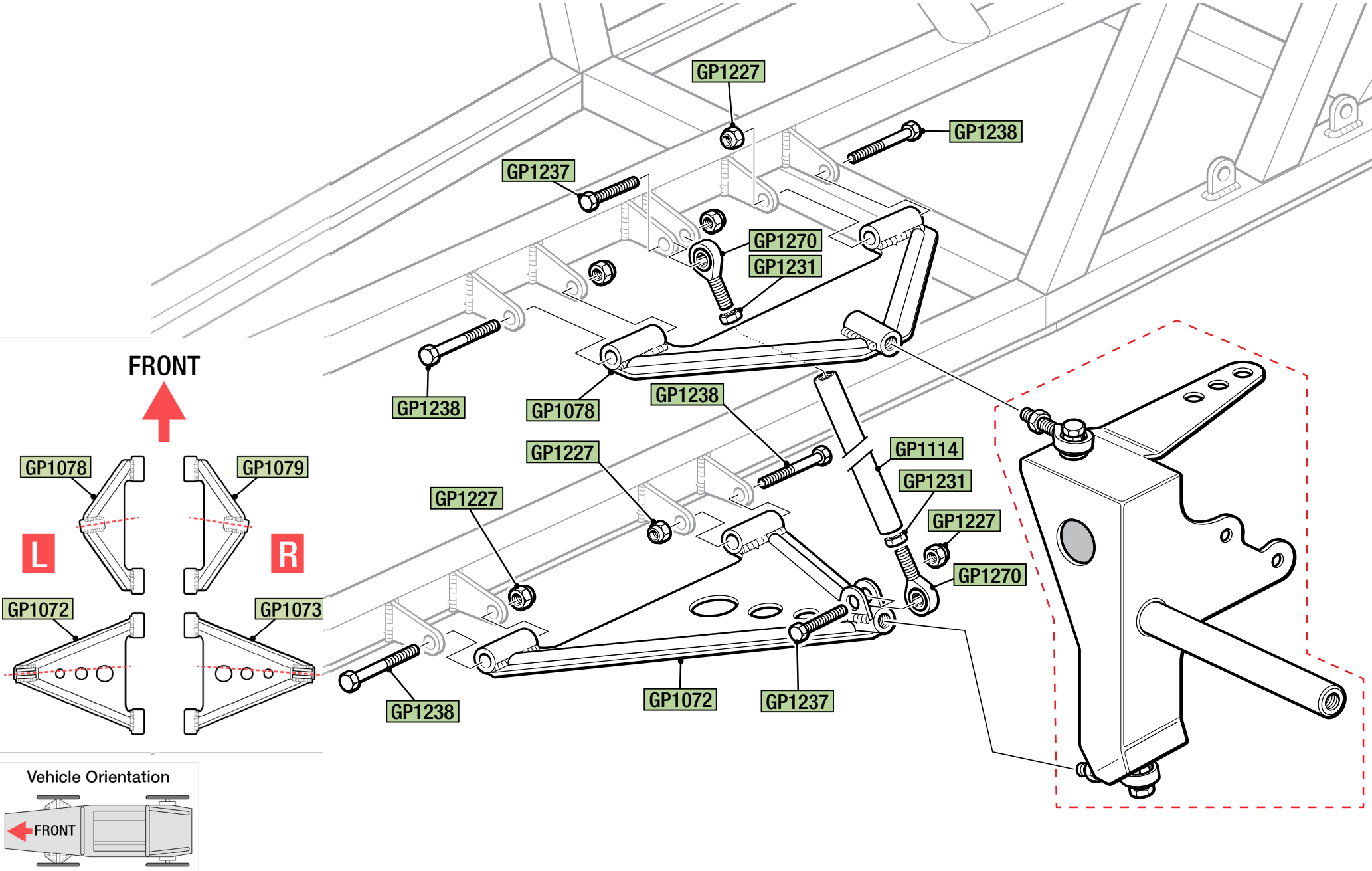
# FRONT UPRIGHT ASSEMBLY

---





# CAMBER, TRACKING, ACKERMANN & RIDE HEIGHT



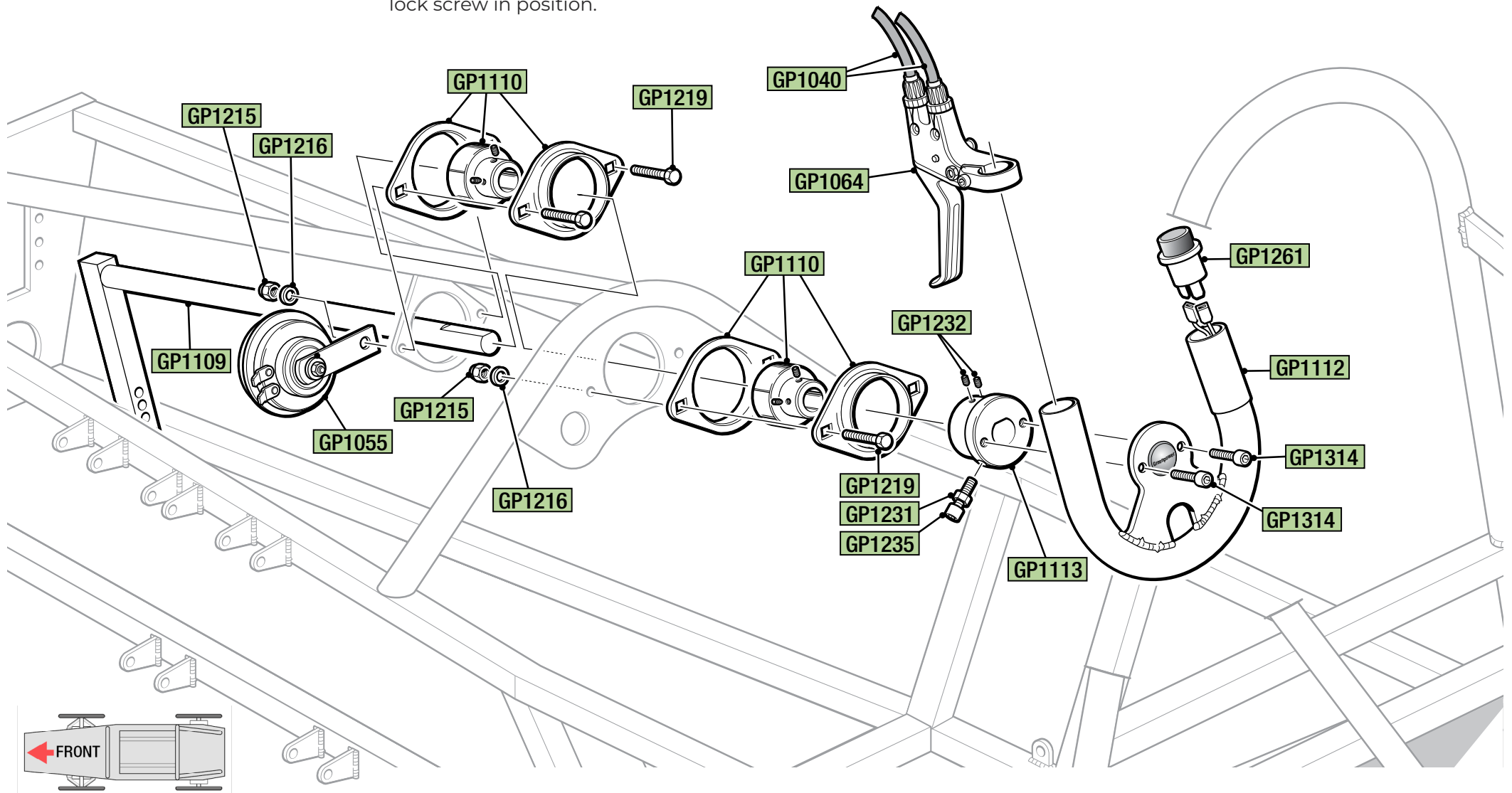
# STEERING SYSTEM, HORN, BRAKE LEVER & STARTER BUTTON

**NOTE:**

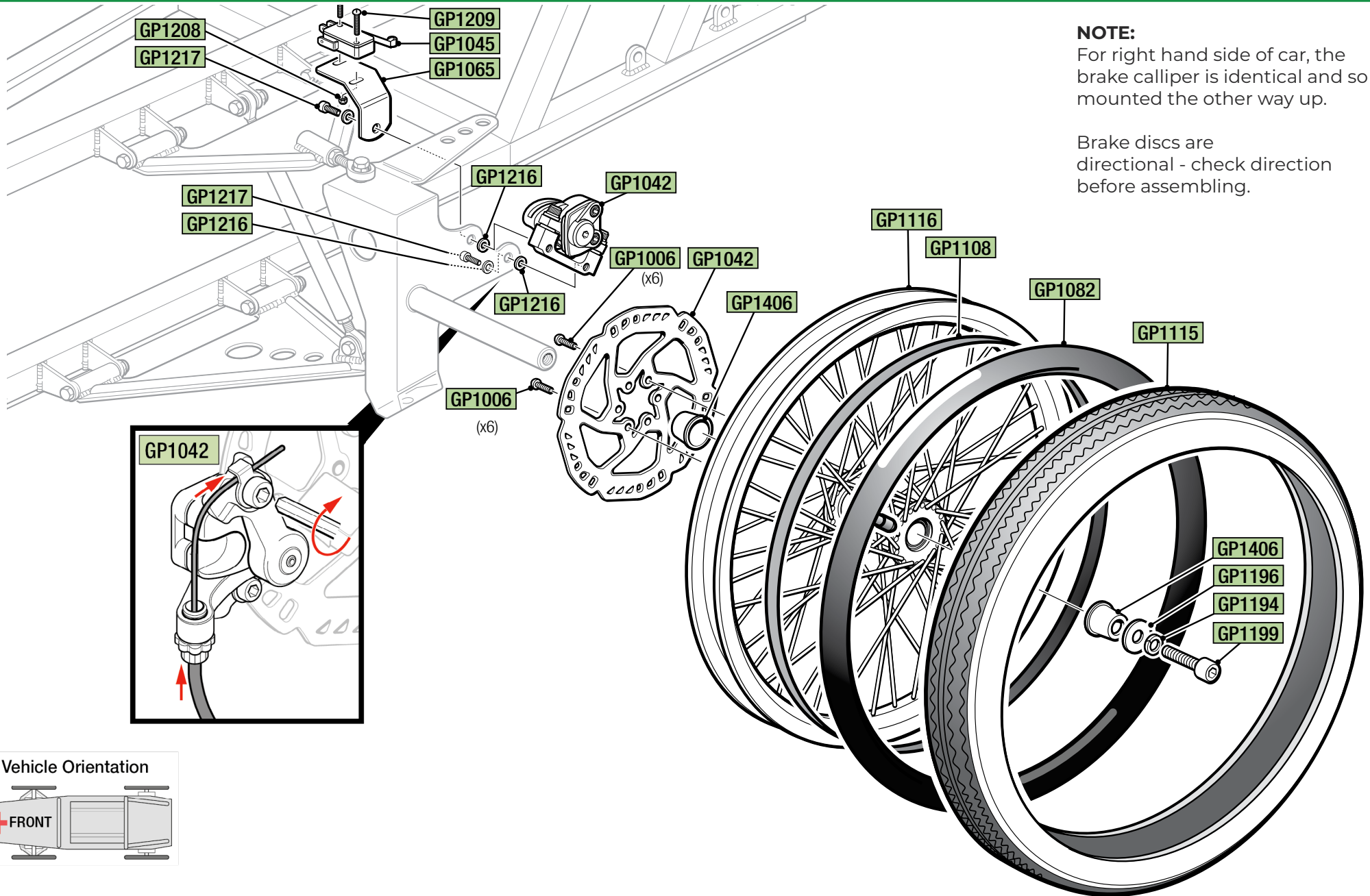
Do not tighten GP1109 bearing bolts or grub screws until steering column position is finalised.

**NOTE:**

When Steering wheel GP1112 is assembled fully tighten screw GP1235. Tighten nut GP1231 to lock screw in position.



# FRONT WHEEL & BRAKE ASSEMBLY

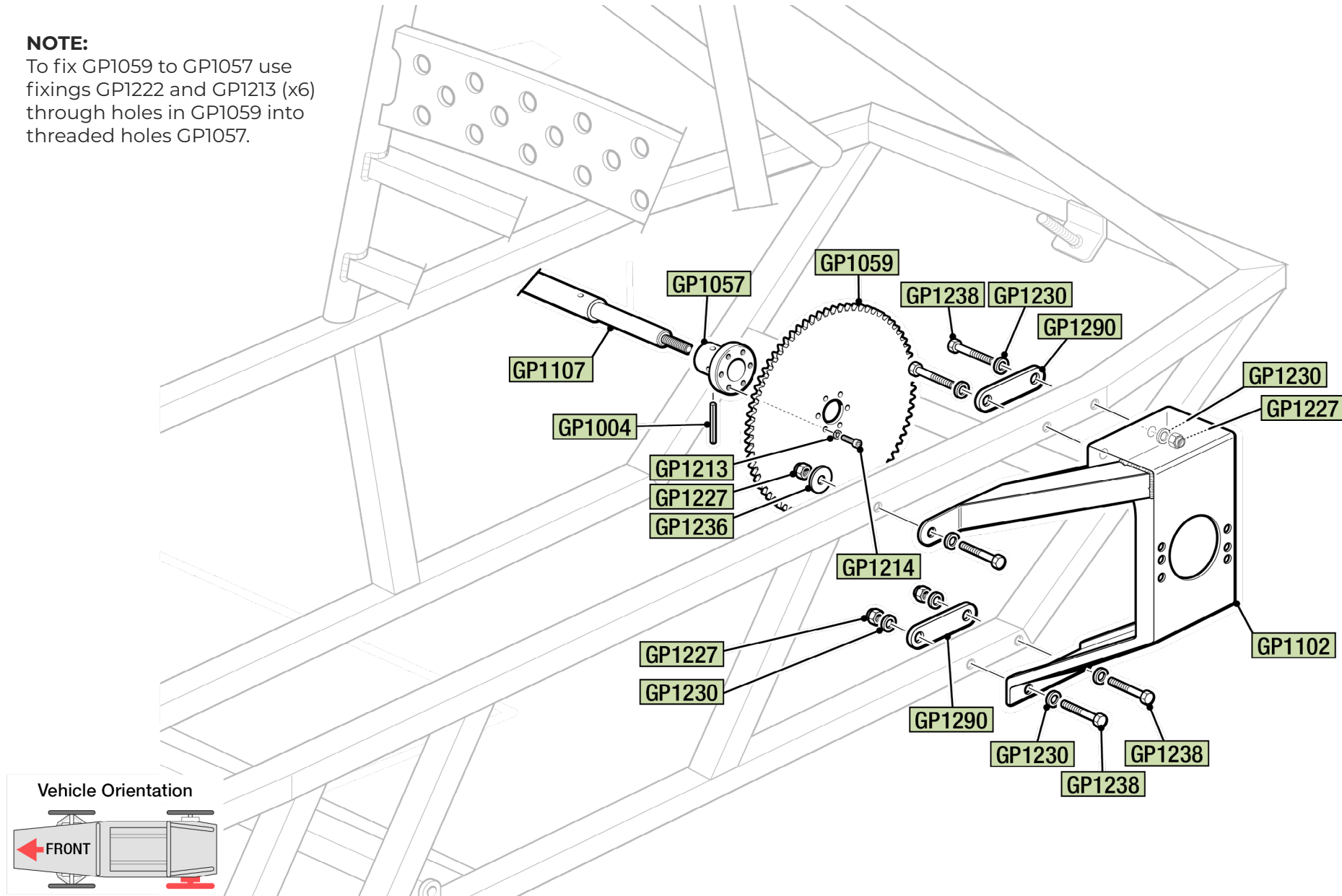




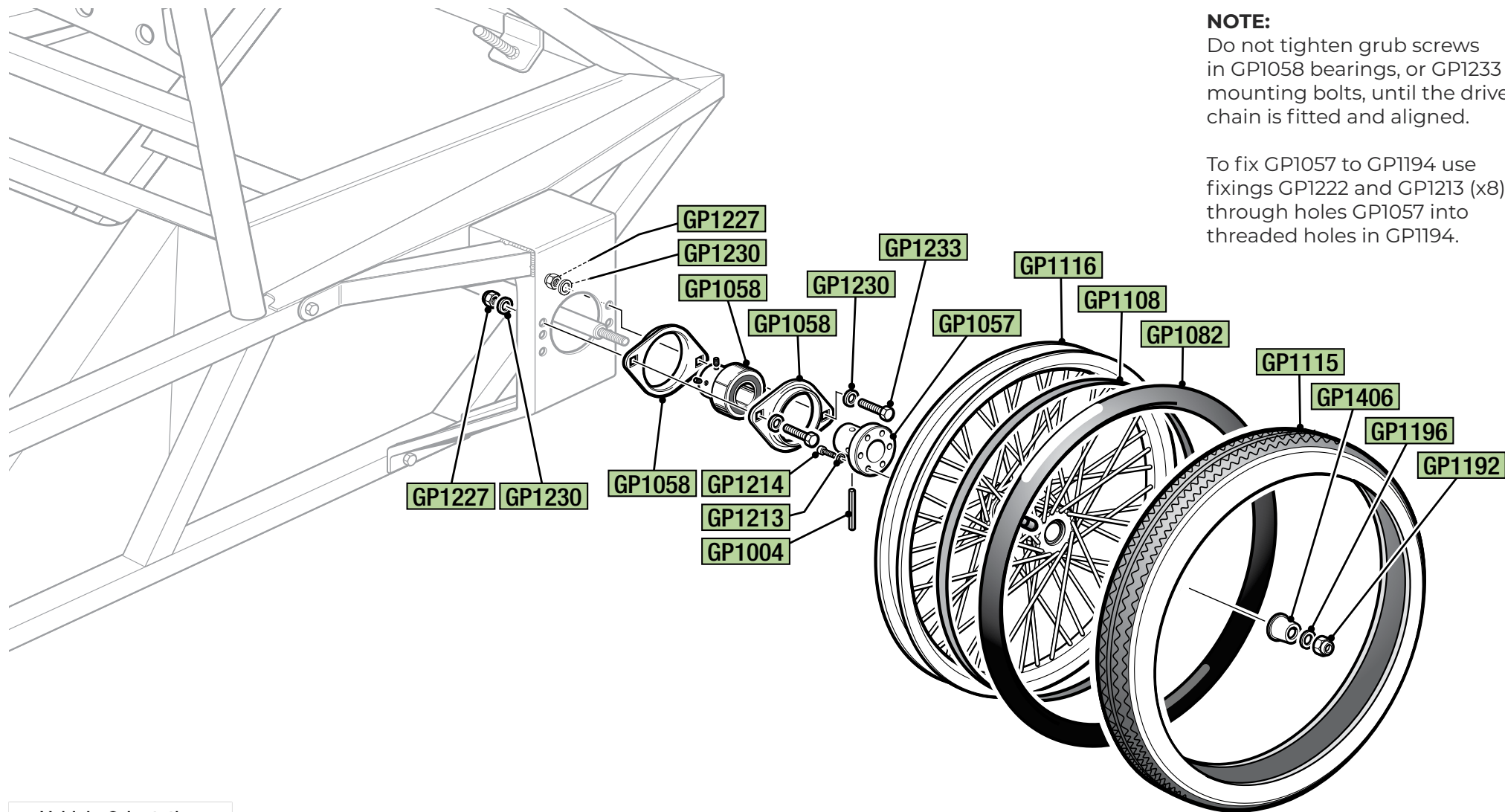
# REAR AXLE ASSEMBLY

## NOTE:

To fix GP1059 to GP1057 use fixings GP1222 and GP1213 (x6) through holes in GP1059 into threaded holes GP1057.



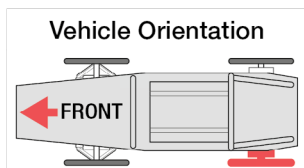
# REAR DRIVE WHEEL ASSEMBLY



**NOTE:**

Do not tighten grub screws in GP1058 bearings, or GP1233 mounting bolts, until the drive chain is fitted and aligned.

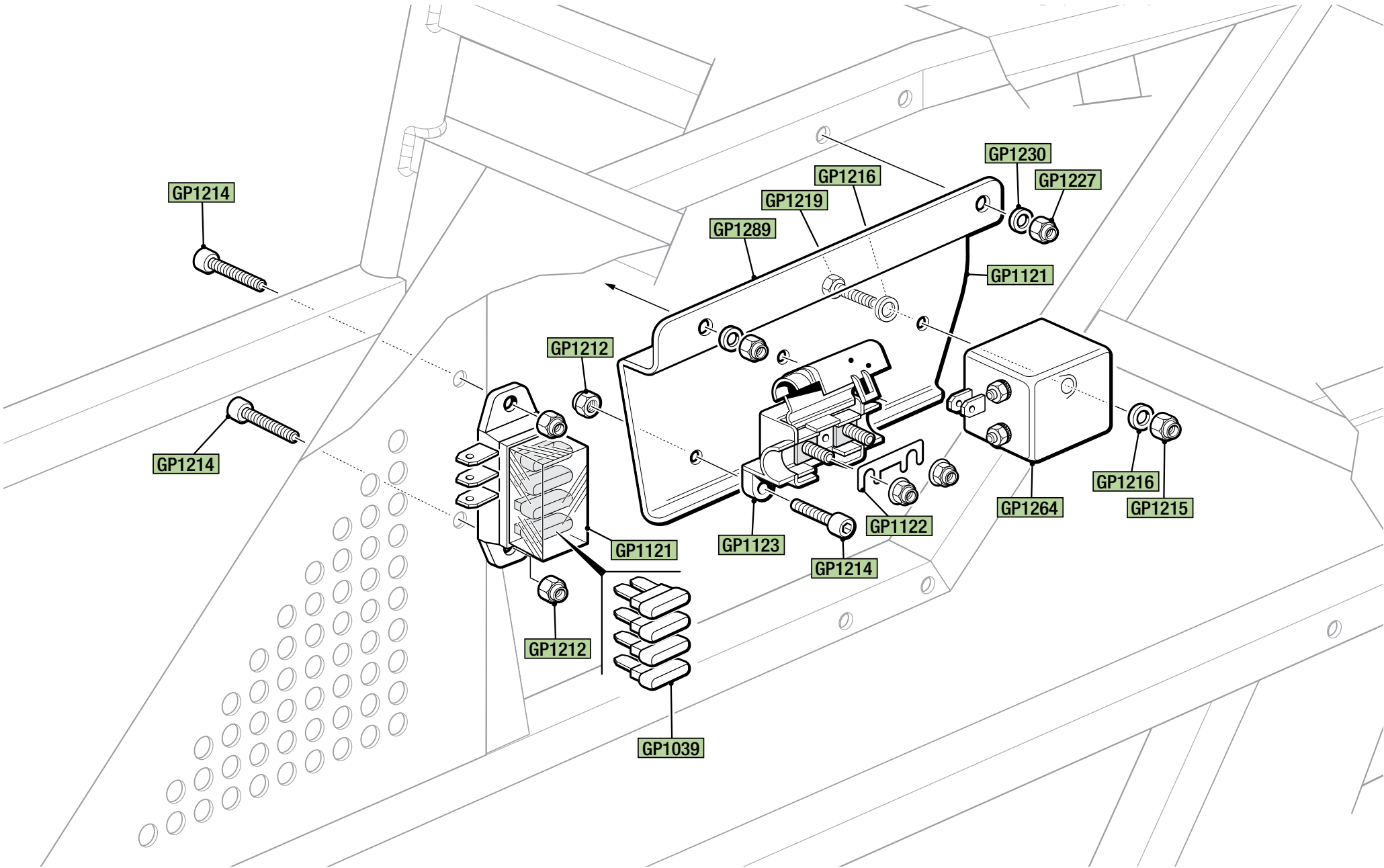
To fix GP1057 to GP1194 use fixings GP1222 and GP1213 (x8) through holes GP1057 into threaded holes in GP1194.



**NOTE:**

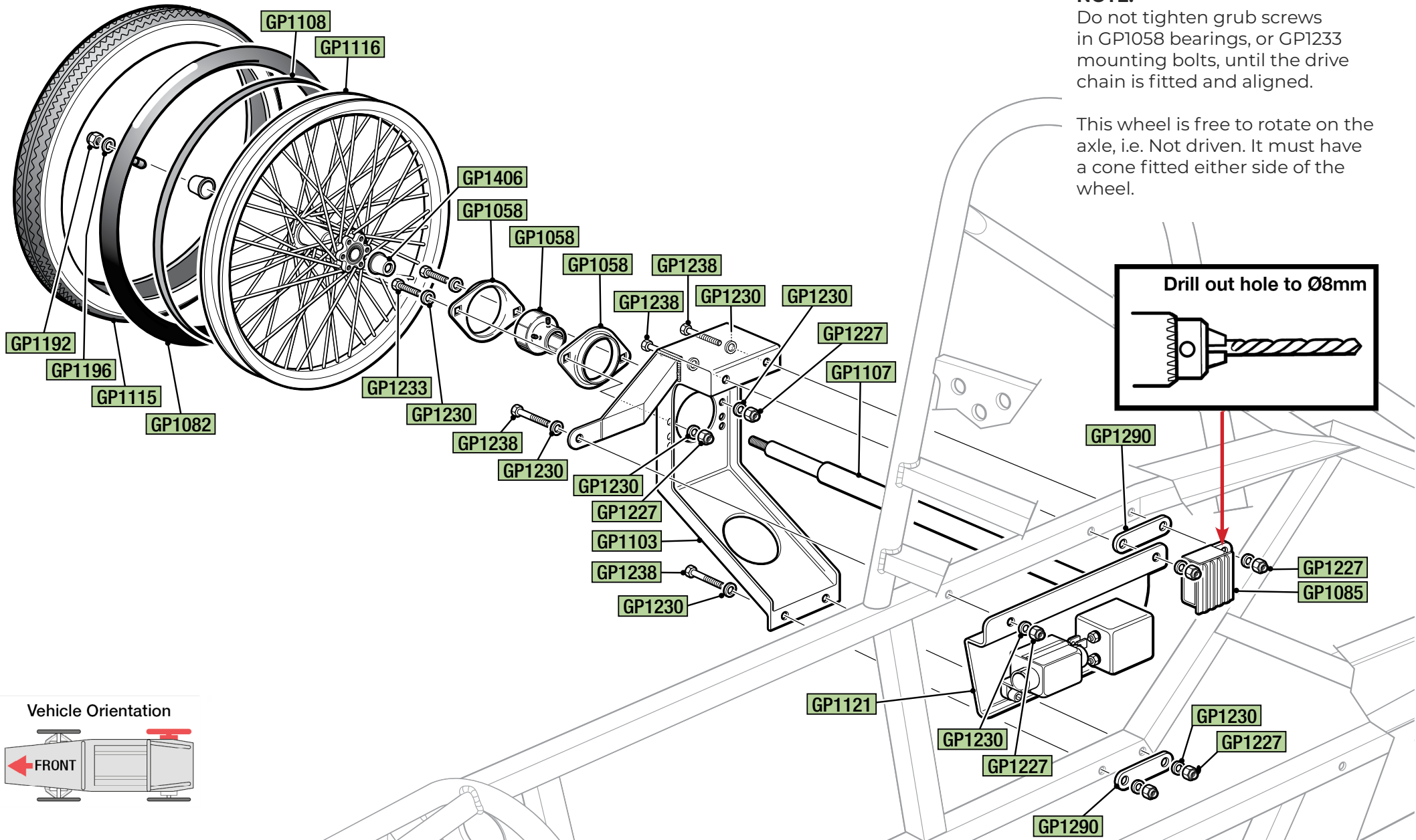
On left hand side of car (drive wheel), only one cone is needed, on outside wheel.

# ELECTRICS

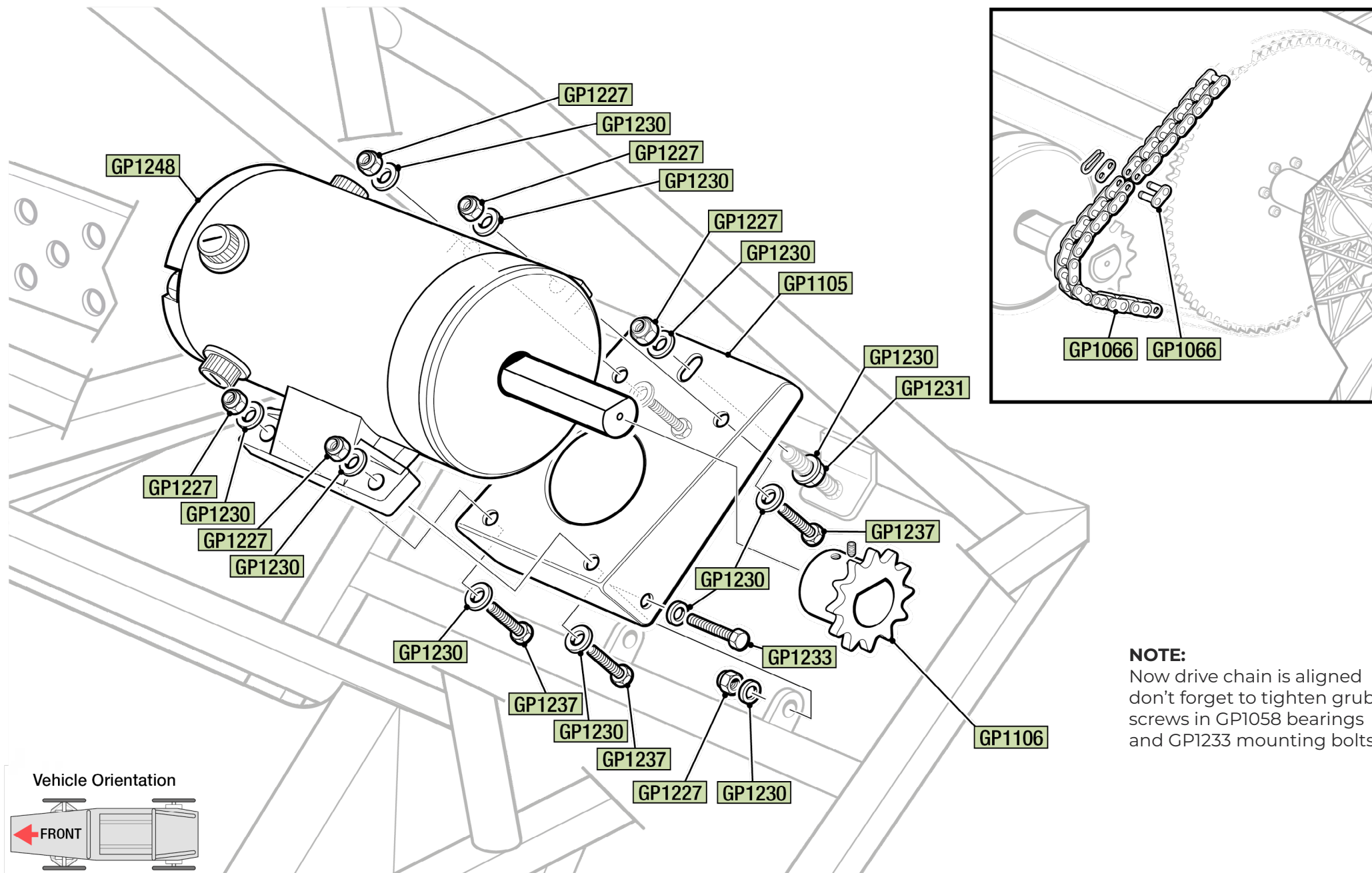




# REAR FREE WHEEL ASSEMBLY

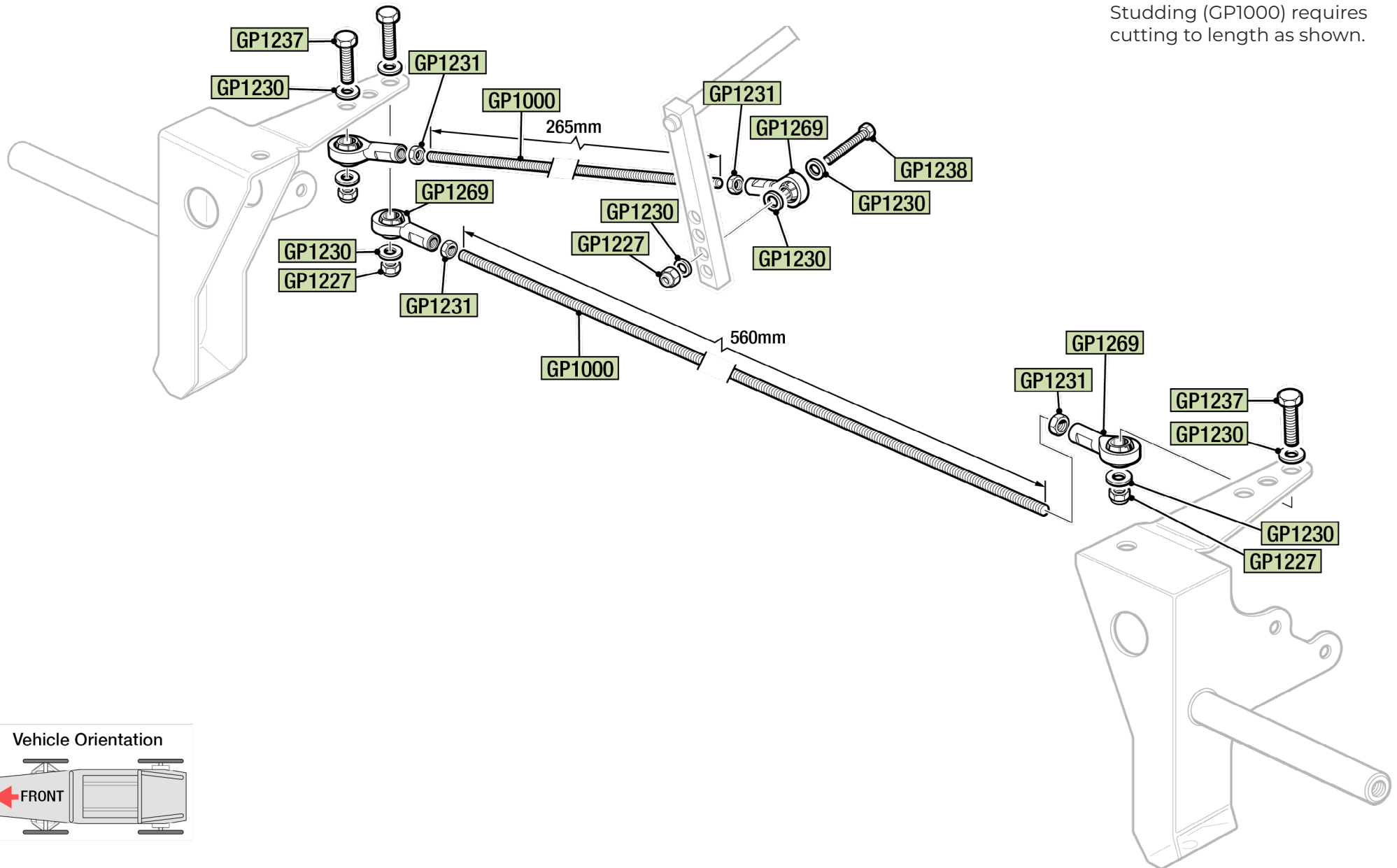


# MOTOR & CHAIN ASSEMBLY



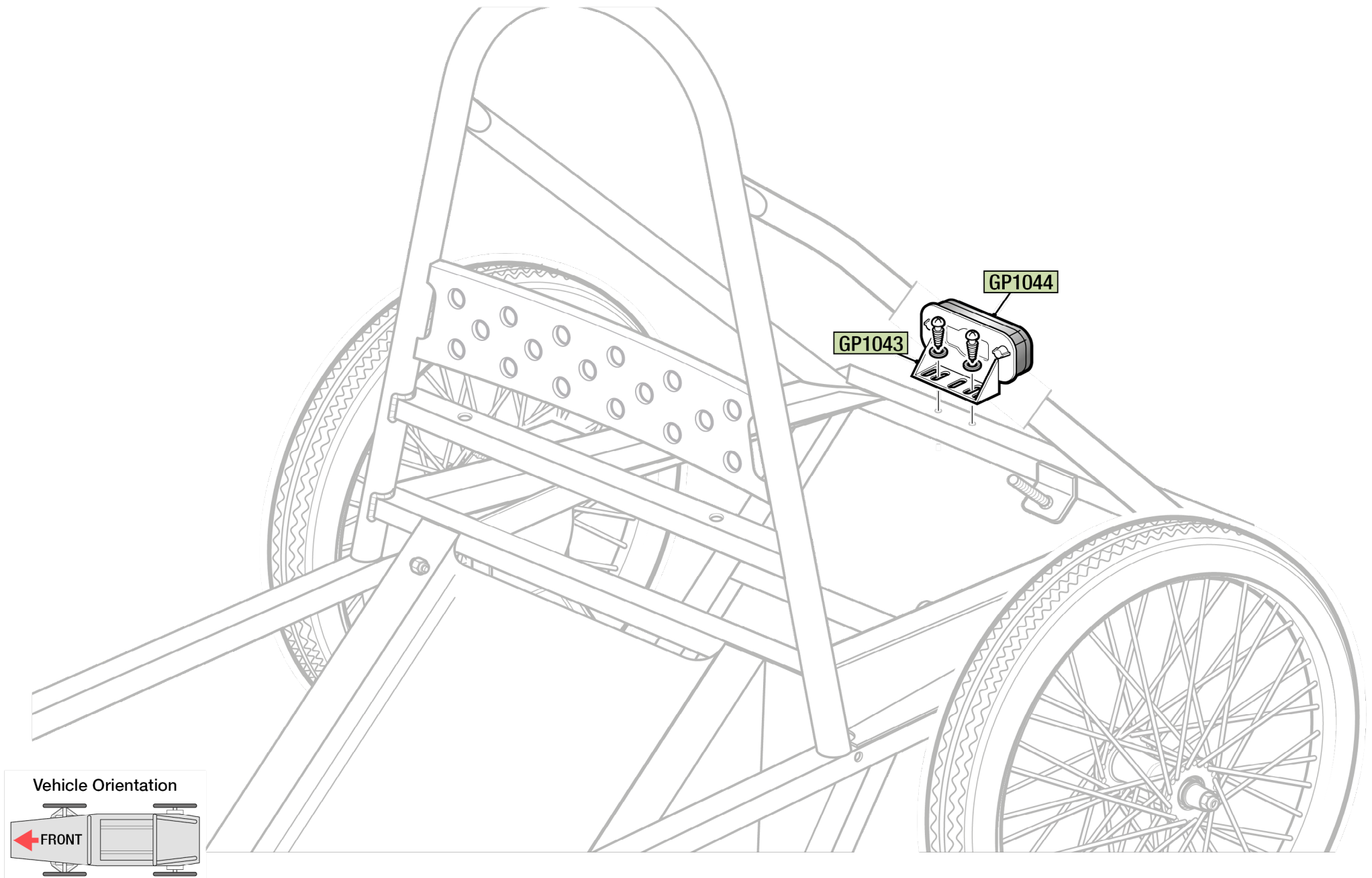
**NOTE:**  
Now drive chain is aligned don't forget to tighten grub screws in GP1058 bearings and GP1233 mounting bolts.

# STEERING LINKAGE ASSEMBLY

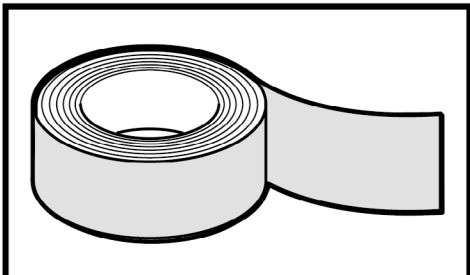




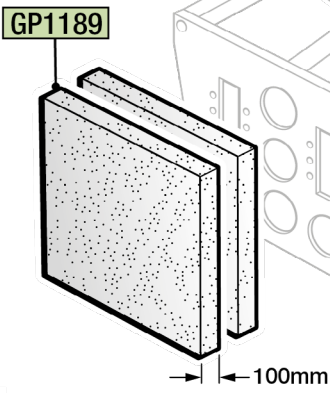
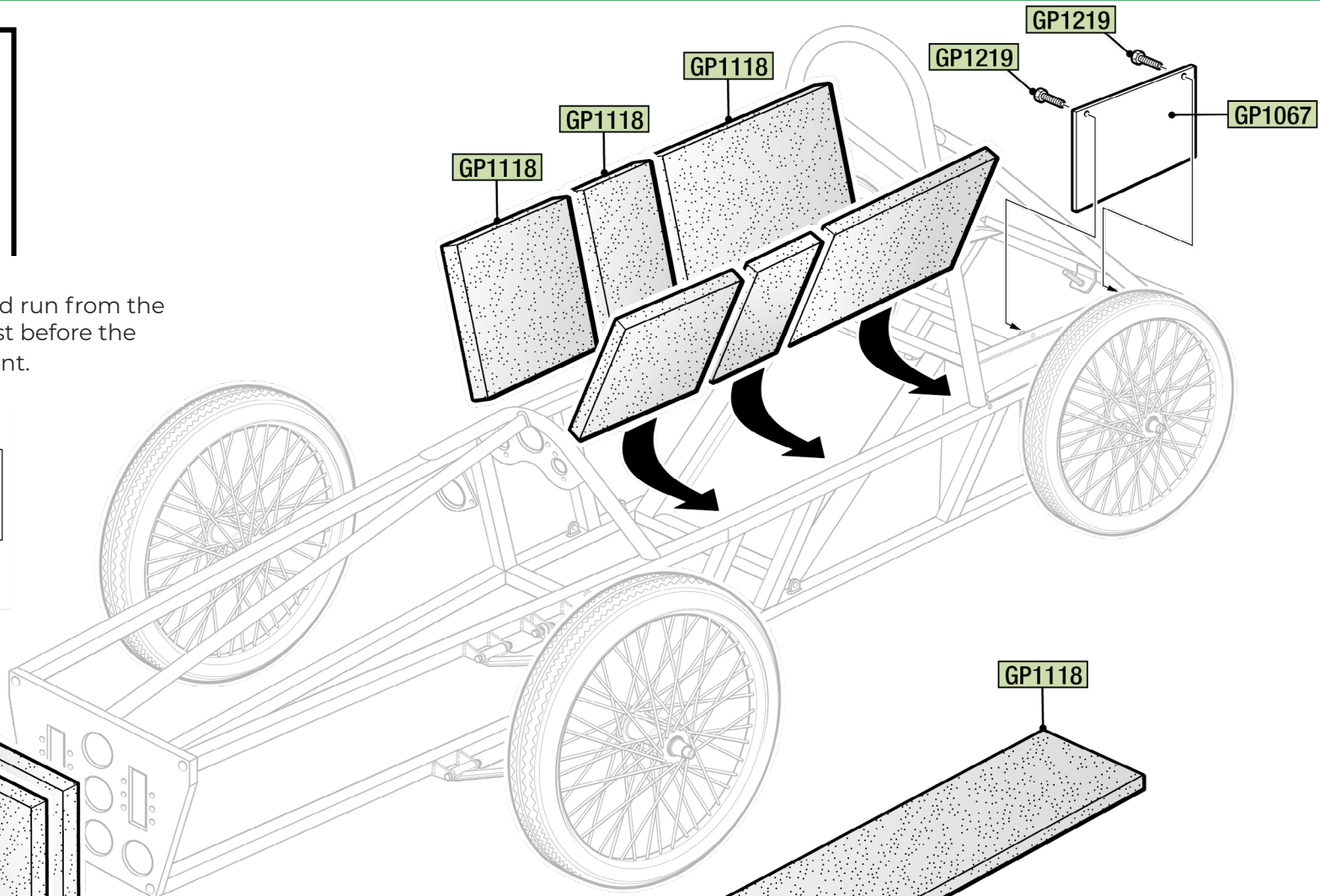
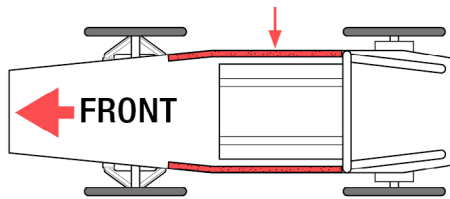
# HEADREST & REAR LIGHT



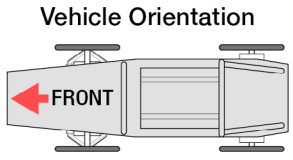
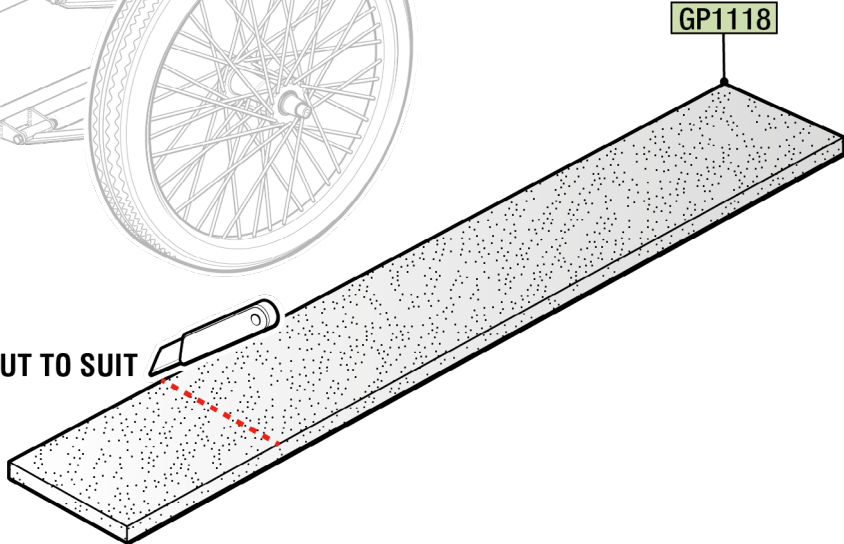
# COCKPIT & NOSE CONE PADDING



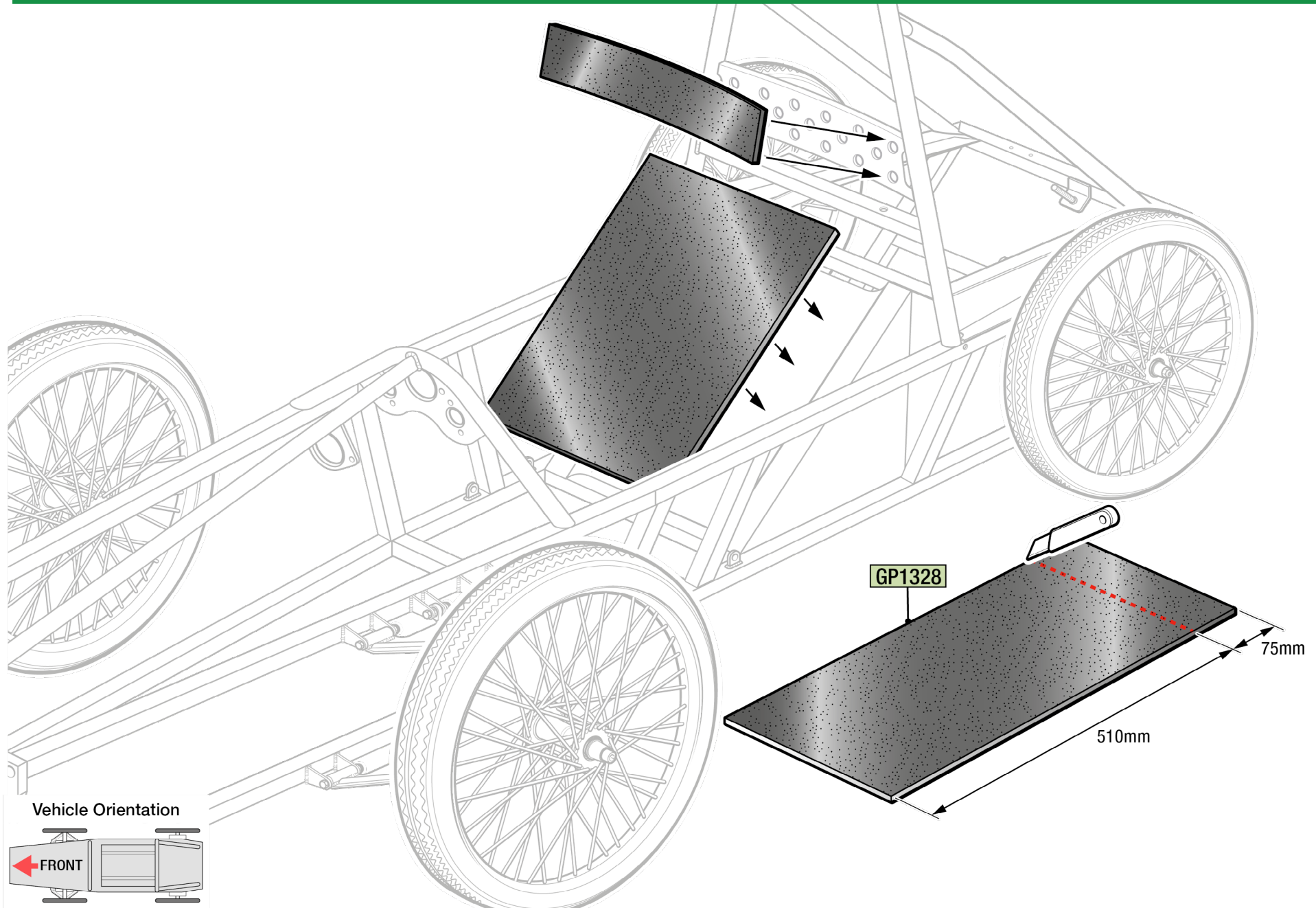
**NOTE:**  
Side protection foam GP1118 should run from the roll over bar forwards to a point just before the rear front wishbone mounting point.



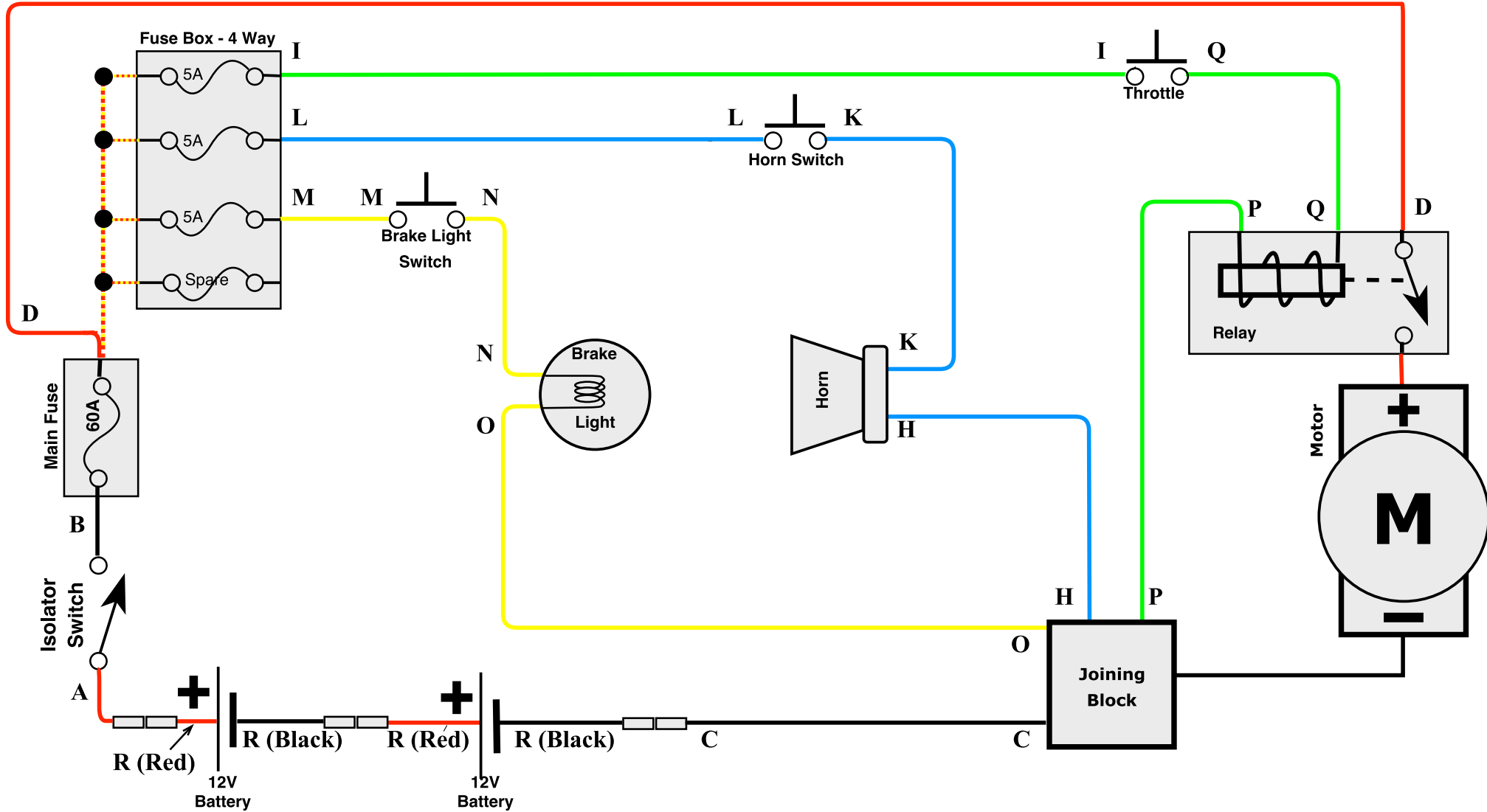
CUT TO SUIT

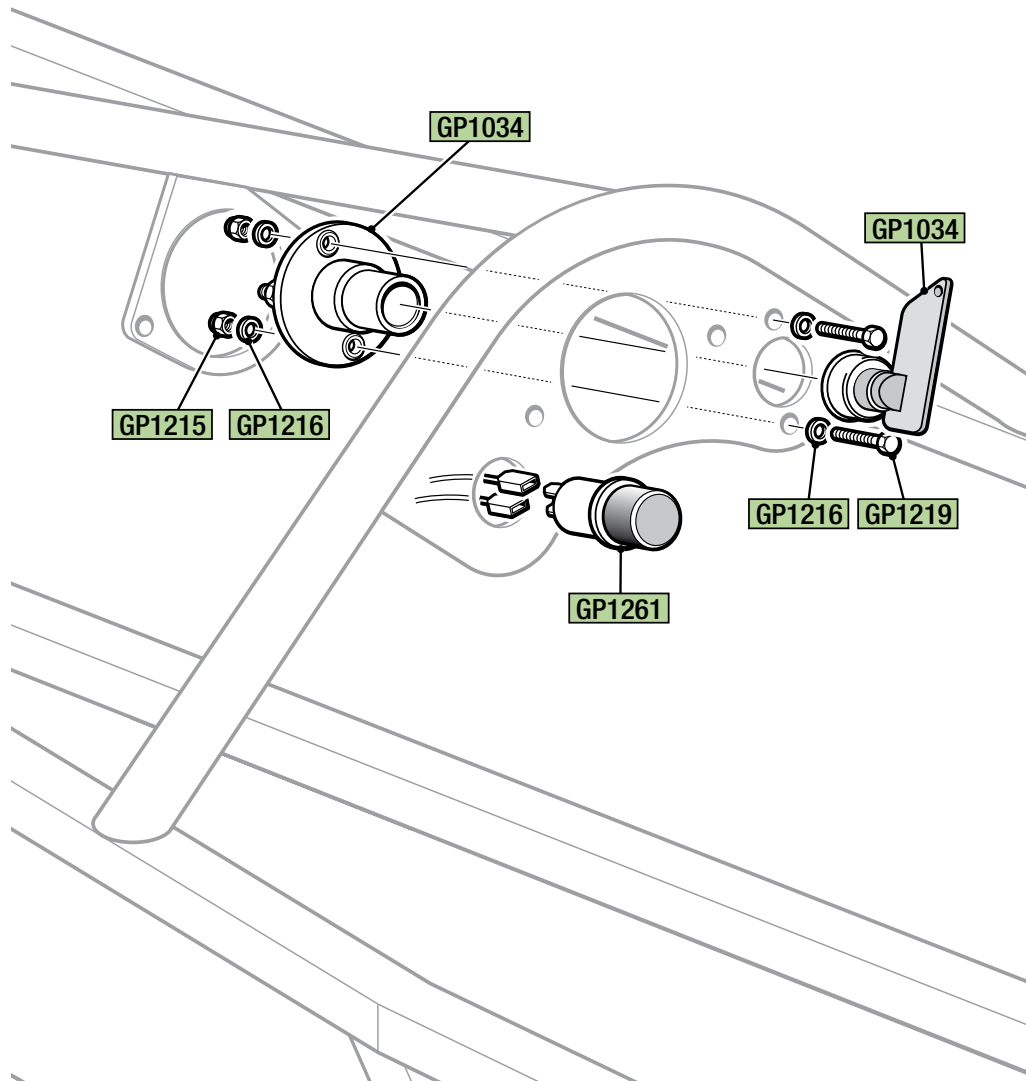


# SEAT BACK & HEADREST PADDING



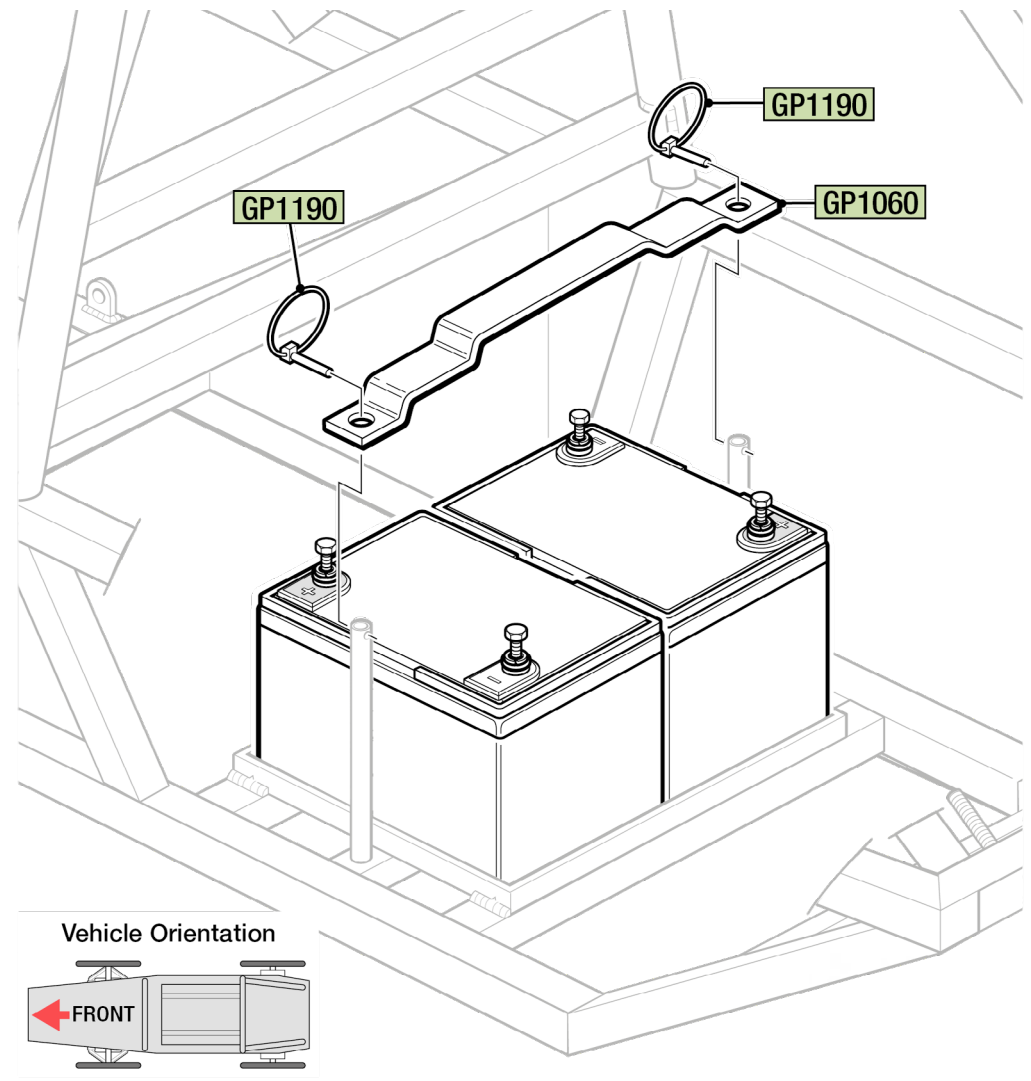
# WIRING DIAGRAM



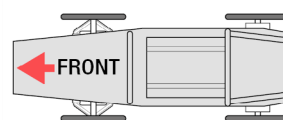


## IMPORTANT NOTE:

Do NOT install / connect batteries until all wiring is complete and checked to be correct - failure to do so may result in damage which could ultimately result in a fire. Ensure Positive Lead fits to Positive (+) terminal and Negative Lead fits to Negative (-) terminal.



Vehicle Orientation





# MORE INFORMATION

---



Greenpowertrust



@Greenpowertrust



@Greenpowertrust



Company/greenpower-education-trust

## **Greenpower Education Trust**

The Greenpower Centre  
Arundel Road  
Fontwell  
West Sussex  
BN18 0SD

T: **01243 552 305**

E: **info@greenpower.co.uk**

W: **www.greenpower.co.uk**

*Greenpower Education Trust is a charity registered in England and Wales no. 1133536 and in Scotland no. SC046969*

© All Rights Reserved - Greenpower Education Trust